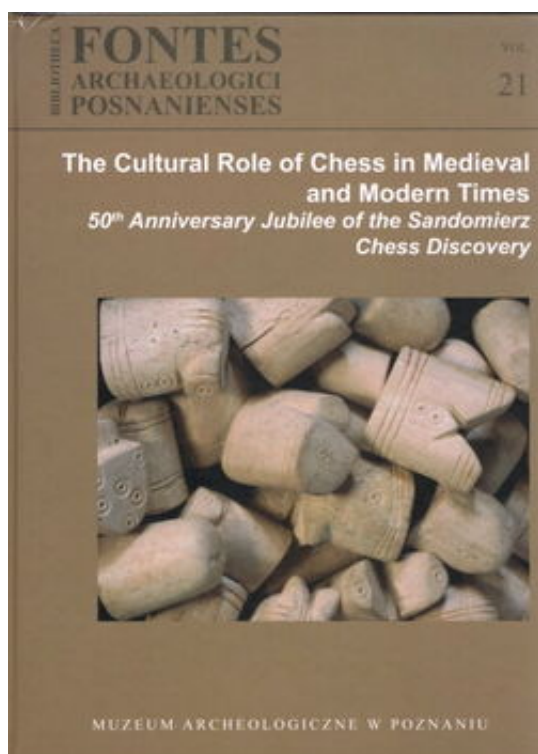


2024-02-18

## Chess piece finds in Sandomierz and a conference volume

**Late - but certainly not too late!**



Cover [The Cultural Role of Chess in Medieval and Modern Times -](#)

by Siegfried Schönle [You can find the original article in German [here](#). Translation by DeepL]

Who among the chess piece collectors and chess book collectors knows right away where Sandomierz is and what was found there? Certainly very few!

I didn't know, or more precisely: I didn't know anything about this place!

Sandomierz is a place in Poland, located south-west of Lublin and about 230 kilometres south of Warsaw.

A conference of Polish and international researchers, organised and led by Ms. Agnieszka Stempin, dealt with the sensational finds from the years around 1968. The conference took place after 50 years, in 2018, under the title:

The Cultural Role of Chess in Medieval and Modern Times  
50th Anniversary Jubilee of the Sandomierz Chess Discovery

This highly recommended conference volume [MUZEUM ARCHEOLOGICZNE W POZNANIU BIBLIOTHECA FONTES ARCHAEOLOGICI POSNANIENSES, Vol. 21] was edited by Ms. Agnieszka

Stempin and is printed entirely in English. The lectures and essays are divided into 5 groups:

1. Sandomierz Chess in the Context of the Medieval Chess Finds from Poland – 50 years of Mystery
2. Archaeology of Chess – Between East and West
3. Terminology and Image of Chess in Medieval Written Sources
4. Around the Game
5. Reminiscences

For further and more detailed information, the table of contents is provided here and it will be seen that the conference did not only deal with the figurine finds in Sandomierz, but also placed them in the context of numerous finds from Poland and in a wider European framework.



#### — The Cultural Role of Chess in Medieval and Modern Times - title

The image shows the table of contents of the book. It is divided into two main sections: "Sandomierz Chess in the Context of the Medieval Chess Finds from Poland" and "Archaeology of Chess – Between East and West". The first section includes chapters on the discovery of the chess finds, the chess finds from the 13th century, and the chess finds from the 14th century. The second section includes chapters on the chess finds from the 15th century, the chess finds from the 16th century, and the chess finds from the 17th century. The table lists the chapter titles and their corresponding page numbers.

#### — The Cultural Role of Chess in Medieval and Modern Times - Contexts

(1)





page 10

•



85

— The Cultural Role of Chess in Medieval and Modern Times - page

The volume can be ordered from Ms. Agnieszka Stempin of the Museum of Archaeology in Poznan (Poznan) for approx. **22 euros + postage**.

Mail: [agnieszka.stempin@muzarp.poznan.pl](mailto:agnieszka.stempin@muzarp.poznan.pl)

Siegfried Schönle (Kassel), February 2024