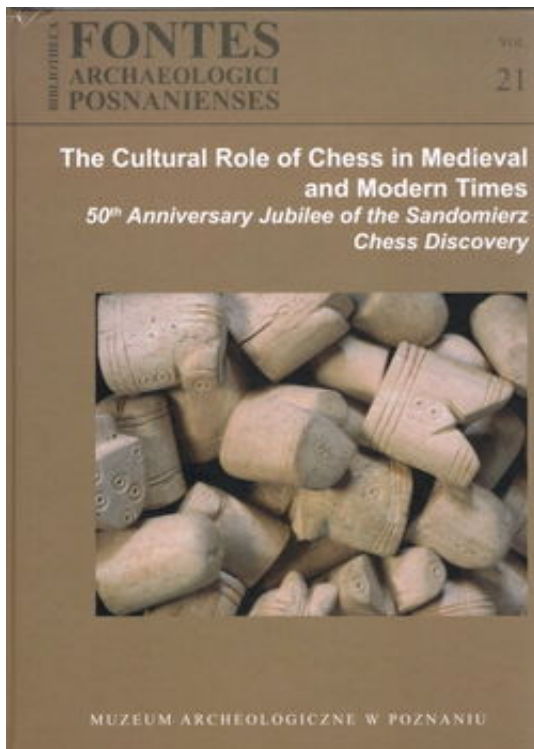


18.02.2024

Schachfigurenfunde in Sandomierz und ein Tagungsband

Spät – aber sicherlich nicht zu spät!



The Cultural Role of Chess in Medieval and Modern Times -

Titelseite

von Siegfried Schönle

Wer weiß schon von den Schach-Figuren-Sammlern und Schach-Bücher-Sammlern auf Anhieb, wo Sandomierz liegt und was dort gefunden wurde? Sicherlich nur sehr wenige!

Ich wusste es nicht, noch genauer: Nichts wusste ich von diesem Ort!

Sandomierz ist ein Ort in Polen, genauer gesagt südwestlich von Lublin gelegen und etwa 230 km südlich von Warszawa (Warschau).

Eine Konferenz polnischer und internationaler Forscher, organisiert und geleitet von Frau Agnieszka Stempin, beschäftigte sich mit den sensationellen Funden aus den Jahren um 1968. Die Konferenz fand nach 50 Jahren, 2018, statt, unter dem Titel:

The Cultural Role of Chess in Medieval and Modern Times
50th Anniversary Jubilee of the Sandomierz Chess Discovery

Dieser hier sehr zu empfehlende Tagungsband [MUZEUM ARCHEOLOGICZNE W POZNANIU

1. Sandomierz Chess in the Context of the Medieval Chess Finds from Poland – 50 years of Mystery
2. Archaeology of Chess – Between East and West
3. Terminology and Image of Chess in Medieval Written Sources
4. Around the Game
5. Reminiscences

1998, 1999, 2000, 2001, 2002, 2003, 2004, 2005, 2006, 2007, 2008, 2009, 2010, 2011, 2012, 2013, 2014, 2015, 2016, 2017, 2018, 2019, 2020, 2021, 2022, 2023, 2024, 2025, 2026, 2027, 2028, 2029, 2030, 2031, 2032, 2033, 2034, 2035, 2036, 2037, 2038, 2039, 2040, 2041, 2042, 2043, 2044, 2045, 2046, 2047, 2048, 2049, 2050, 2051, 2052, 2053, 2054, 2055, 2056, 2057, 2058, 2059, 2060, 2061, 2062, 2063, 2064, 2065, 2066, 2067, 2068, 2069, 2070, 2071, 2072, 2073, 2074, 2075, 2076, 2077, 2078, 2079, 2080, 2081, 2082, 2083, 2084, 2085, 2086, 2087, 2088, 2089, 2090, 2091, 2092, 2093, 2094, 2095, 2096, 2097, 2098, 2099, 2100, 2101, 2102, 2103, 2104, 2105, 2106, 2107, 2108, 2109, 2110, 2111, 2112, 2113, 2114, 2115, 2116, 2117, 2118, 2119, 2120, 2121, 2122, 2123, 2124, 2125, 2126, 2127, 2128, 2129, 2130, 2131, 2132, 2133, 2134, 2135, 2136, 2137, 2138, 2139, 2140, 2141, 2142, 2143, 2144, 2145, 2146, 2147, 2148, 2149, 2150, 2151, 2152, 2153, 2154, 2155, 2156, 2157, 2158, 2159, 2160, 2161, 2162, 2163, 2164, 2165, 2166, 2167, 2168, 2169, 2170, 2171, 2172, 2173, 2174, 2175, 2176, 2177, 2178, 2179, 2180, 2181, 2182, 2183, 2184, 2185, 2186, 2187, 2188, 2189, 2190, 2191, 2192, 2193, 2194, 2195, 2196, 2197, 2198, 2199, 2200, 2201, 2202, 2203, 2204, 2205, 2206, 2207, 2208, 2209, 2210, 2211, 2212, 2213, 2214, 2215, 2216, 2217, 2218, 2219, 2220, 2221, 2222, 2223, 2224, 2225, 2226, 2227, 2228, 2229, 2230, 2231, 2232, 2233, 2234, 2235, 2236, 2237, 2238, 2239, 2240, 2241, 2242, 2243, 2244, 2245, 2246, 2247, 2248, 2249, 2250, 2251, 2252, 2253, 2254, 2255, 2256, 2257, 2258, 2259, 2260, 2261, 2262, 2263, 2264, 2265, 2266, 2267, 2268, 2269, 2270, 2271, 2272, 2273, 2274, 2275, 2276, 2277, 2278, 2279, 2280, 2281, 2282, 2283, 2284, 2285, 2286, 2287, 2288, 2289, 2290, 2291, 2292, 2293, 2294, 2295, 2296, 2297, 2298, 2299, 2300, 2301, 2302, 2303, 2304, 2305, 2306, 2307, 2308, 2309, 2310, 2311, 2312, 2313, 2314, 2315, 2316, 2317, 2318, 2319, 2320, 2321, 2322, 2323, 2324, 2325, 2326, 2327, 2328, 2329, 2330, 2331, 2332, 2333, 2334, 2335, 2336, 2337, 2338, 2339, 2340, 2341, 2342, 2343, 2344, 2345, 2346, 2347, 2348, 2349, 2350, 2351, 2352, 2353, 2354, 2355, 2356, 2357, 2358, 2359, 2360, 2361, 2362, 2363, 2364, 2365, 2366, 2367, 2368, 2369, 2370, 2371, 2372, 2373, 2374, 2375, 2376, 2377, 2378, 2379, 2380, 2381, 2382, 2383, 2384, 2385, 2386, 2387, 2388, 2389, 2390, 2391, 2392, 2393, 2394, 2395, 2396, 2397, 2398, 2399, 2400, 2401, 2402, 2403, 2404, 2405, 2406, 2407, 2408, 2409, 2410, 2411, 2412, 2413, 2414, 2415, 2416, 2417, 2418, 2419, 2420, 2421, 2422, 2423, 2424, 2425, 2426, 2427, 2428, 2429, 2430, 2431, 2432, 2433, 2434, 2435, 2436, 2437, 2438, 2439, 2440, 2441, 2442, 2443, 2444, 2445, 2446, 2447, 2448, 2449, 2450, 2451, 2452, 2453, 2454, 2455, 2456, 2457, 2458, 2459, 2460, 2461, 2462, 2463, 2464, 2465, 2466, 2467, 2468, 2469, 2470, 2471, 2472, 2473, 2474, 2475, 2476, 2477, 2478, 2479, 2480, 2481, 2482, 2483, 2484, 2485, 2486, 2487, 2488, 2489, 2490, 2491, 2492, 2493, 2494, 2495, 2496, 2497, 2498, 2499, 2500, 2501, 2502, 2503, 2504, 2505, 2506, 2507, 2508, 2509, 2510, 2511, 2512, 2513, 2514, 2515, 2516, 2517, 2518, 2519, 2520, 2521, 2522, 2523, 2524, 2525, 2526, 2527, 2528, 2529, 2530, 2531, 2532, 2533, 2534, 2535, 2536, 2537, 2538, 2539, 2540, 2541, 2542, 2543, 2544, 2545, 2546, 2547, 2548, 2549, 2550, 2551, 2552, 2553, 2554, 2555, 2556, 2557, 2558, 2559, 2560, 2561, 2562, 2563, 2564, 2565, 2566, 2567, 2568, 2569, 2570, 2571, 2572, 2573, 2574, 2575, 2576, 2577, 2578, 2579, 2580, 2581, 2582, 2583, 2584, 2585, 2586, 2587, 2588, 2589, 2590, 2591, 2592, 2593, 2594, 2595, 2596, 2597, 2598, 2599, 2600, 2601, 2602, 2603, 2604, 2605, 2606, 2607, 2608, 2609, 2610, 2611, 2612, 2613, 2614, 2615, 2616, 2617, 2618, 2619, 2620, 2621, 2622, 2623, 2624, 2625, 2626, 2627, 2628, 2629, 2630, 2631, 2632, 2633, 2634, 2635, 2636, 2637, 2638, 2639, 2640, 2641, 2642, 2643, 2644, 2645, 2646, 2647, 2648, 2649, 2650, 2651, 2652, 2653, 2654, 2655, 2656, 2657, 2658, 2659, 2660, 2661, 2662, 2663, 2664, 2665, 2666, 2667, 2668, 2669, 2670, 2671, 2672, 2673, 2674, 2675, 2676, 2677, 2678, 2679, 26



Table 2. Continued

	Indicators (How to Calculate the Standardized Score)	
	Health Status	Group of Indicators
Indicator Score		
1. Mortality	1. Mortality rate (per 1,000 live births)	10
2. Infant mortality	2. Infant mortality rate (per 1,000 live births)	10
3. Neonatal mortality	3. Neonatal mortality rate (per 1,000 live births)	10
4. Perinatal mortality	4. Perinatal mortality rate (per 1,000 live births)	10
5. Stillbirth rate	5. Stillbirth rate (per 1,000 live births)	10
6. Fetal mortality	6. Fetal mortality rate (per 1,000 live births)	10
7. Maternal mortality	7. Maternal mortality rate (per 1,000 live births)	10
8. Infant mortality	8. Infant mortality rate (per 1,000 live births)	10
9. Neonatal mortality	9. Neonatal mortality rate (per 1,000 live births)	10
10. Perinatal mortality	10. Perinatal mortality rate (per 1,000 live births)	10
11. Stillbirth rate	11. Stillbirth rate (per 1,000 live births)	10
12. Fetal mortality	12. Fetal mortality rate (per 1,000 live births)	10
13. Maternal mortality	13. Maternal mortality rate (per 1,000 live births)	10
14. Infant mortality	14. Infant mortality rate (per 1,000 live births)	10
15. Neonatal mortality	15. Neonatal mortality rate (per 1,000 live births)	10
16. Perinatal mortality	16. Perinatal mortality rate (per 1,000 live births)	10
17. Stillbirth rate	17. Stillbirth rate (per 1,000 live births)	10
18. Fetal mortality	18. Fetal mortality rate (per 1,000 live births)	10
19. Maternal mortality	19. Maternal mortality rate (per 1,000 live births)	10
20. Infant mortality	20. Infant mortality rate (per 1,000 live births)	10
21. Neonatal mortality	21. Neonatal mortality rate (per 1,000 live births)	10
22. Perinatal mortality	22. Perinatal mortality rate (per 1,000 live births)	10
23. Stillbirth rate	23. Stillbirth rate (per 1,000 live births)	10
24. Fetal mortality	24. Fetal mortality rate (per 1,000 live births)	10
25. Maternal mortality	25. Maternal mortality rate (per 1,000 live births)	10
26. Infant mortality	26. Infant mortality rate (per 1,000 live births)	10
27. Neonatal mortality	27. Neonatal mortality rate (per 1,000 live births)	10
28. Perinatal mortality	28. Perinatal mortality rate (per 1,000 live births)	10
29. Stillbirth rate	29. Stillbirth rate (per 1,000 live births)	10
30. Fetal mortality	30. Fetal mortality rate (per 1,000 live births)	10
31. Maternal mortality	31. Maternal mortality rate (per 1,000 live births)	10
32. Infant mortality	32. Infant mortality rate (per 1,000 live births)	10
33. Neonatal mortality	33. Neonatal mortality rate (per 1,000 live births)	10
34. Perinatal mortality	34. Perinatal mortality rate (per 1,000 live births)	10
35. Stillbirth rate	35. Stillbirth rate (per 1,000 live births)	10
36. Fetal mortality	36. Fetal mortality rate (per 1,000 live births)	10
37. Maternal mortality	37. Maternal mortality rate (per 1,000 live births)	10
38. Infant mortality	38. Infant mortality rate (per 1,000 live births)	10
39. Neonatal mortality	39. Neonatal mortality rate (per 1,000 live births)	10
40. Perinatal mortality	40. Perinatal mortality rate (per 1,000 live births)	10
41. Stillbirth rate	41. Stillbirth rate (per 1,000 live births)	10
42. Fetal mortality	42. Fetal mortality rate (per 1,000 live births)	10
43. Maternal mortality	43. Maternal mortality rate (per 1,000 live births)	10
44. Infant mortality	44. Infant mortality rate (per 1,000 live births)	10
45. Neonatal mortality	45. Neonatal mortality rate (per 1,000 live births)	10
46. Perinatal mortality	46. Perinatal mortality rate (per 1,000 live births)	10
47. Stillbirth rate	47. Stillbirth rate (per 1,000 live births)	10
48. Fetal mortality	48. Fetal mortality rate (per 1,000 live births)	10
49. Maternal mortality	49. Maternal mortality rate (per 1,000 live births)	10
50. Infant mortality	50. Infant mortality rate (per 1,000 live births)	10
51. Neonatal mortality	51. Neonatal mortality rate (per 1,000 live births)	10
52. Perinatal mortality	52. Perinatal mortality rate (per 1,000 live births)	10
53. Stillbirth rate	53. Stillbirth rate (per 1,000 live births)	10
54. Fetal mortality	54. Fetal mortality rate (per 1,000 live births)	10
55. Maternal mortality	55. Maternal mortality rate (per 1,000 live births)	10
56. Infant mortality	56. Infant mortality rate (per 1,000 live births)	10
57. Neonatal mortality	57. Neonatal mortality rate (per 1,000 live births)	10
58. Perinatal mortality	58. Perinatal mortality rate (per 1,000 live births)	10
59. Stillbirth rate	59. Stillbirth rate (per 1,000 live births)	10
60. Fetal mortality	60. Fetal mortality rate (per 1,000 live births)	10
61. Maternal mortality	61. Maternal mortality rate (per 1,000 live births)	10
62. Infant mortality	62. Infant mortality rate (per 1,000 live births)	10
63. Neonatal mortality	63. Neonatal mortality rate (per 1,000 live births)	10
64. Perinatal mortality	64. Perinatal mortality rate (per 1,000 live births)	10
65. Stillbirth rate	65. Stillbirth rate (per 1,000 live births)	10
66. Fetal mortality	66. Fetal mortality rate (per 1,000 live births)	10
67. Maternal mortality	67. Maternal mortality rate (per 1,000 live births)	10
68. Infant mortality	68. Infant mortality rate (per 1,000 live births)	10
69. Neonatal mortality	69. Neonatal mortality rate (per 1,000 live births)	10
70. Perinatal mortality	70. Perinatal mortality rate (per 1,000 live births)	10
71. Stillbirth rate	71. Stillbirth rate (per 1,000 live births)	10
72. Fetal mortality	72. Fetal mortality rate (per 1,000 live births)	10
73. Maternal mortality	73. Maternal mortality rate (per 1,000 live births)	10
74. Infant mortality	74. Infant mortality rate (per 1,000 live births)	10
75. Neonatal mortality	75. Neonatal mortality rate (per 1,000 live births)	10
76. Perinatal mortality	76. Perinatal mortality rate (per 1,000 live births)	10
77. Stillbirth rate	77. Stillbirth rate (per 1,000 live births)	10
78. Fetal mortality	78. Fetal mortality rate (per 1,000 live births)	10
79. Maternal mortality	79. Maternal mortality rate (per 1,000 live births)	10
80. Infant mortality	80. Infant mortality rate (per 1,000 live births)	10</

●



The Cultural Role of Chess in Medieval and Modern Times -

Seite 10

•



The Cultural Role of Chess in Medieval and Modern Times - Seite

85

Zu bestellen ist der Band für **ca. 22 Euro + Porto** bei Frau Agnieszka Stempin vom Museum für Archäologie in Poznan (Posen).

Mail: agnieszka.stempin@muzarp.poznan.pl

Siegfried Schönle (Kassel), Februar 2024